

---

# opsi Version 4.0.4 Release Notes



uib gmbh  
Bonifaziusplatz 1b  
55118 Mainz  
Tel.: +49 6131 275610  
[www.uib.de](http://www.uib.de)  
[info@uib.de](mailto:info@uib.de)

---

# Contents

<b>1</b>	<b>Copyright</b>	<b>1</b>
<b>2</b>	<b>Overview of the new features</b>	<b>2</b>
<b>3</b>	<b>Discontinuation</b>	<b>4</b>
3.1	Discontinuation of Python 2.5 support . . . . .	4
3.2	Discontinuation: distribution versions . . . . .	4
<b>4</b>	<b>Installation notes</b>	<b>5</b>
4.1	Notes for upgrading on RPM based Servers . . . . .	5
4.2	opsi-Packages notes . . . . .	5
<b>5</b>	<b>opsi-configed 4.0.4.1</b>	<b>6</b>
5.1	The current group will be saved . . . . .	6
5.2	Extended main menu bar . . . . .	6
5.3	Group actions . . . . .	6
5.4	Product actions . . . . .	7
5.5	OpsicLient menu actions . . . . .	8
5.5.1	Enabling and disabling of the client add and remove feature . . . . .	8
5.5.2	WakeOnLan feature with delay . . . . .	8
5.5.3	Triggering special opsiclientd events . . . . .	8
5.5.4	For WAN clients: reset the packet cache . . . . .	8
5.6	New feature of the product configuration . . . . .	8
5.6.1	search function . . . . .	8
5.6.2	Opsi-linux-bootimage . . . . .	9
<b>6</b>	<b>UCS</b>	<b>10</b>
6.1	UCS Executable bit fix . . . . .	10
6.2	Changes of the firewall rules . . . . .	10

---

<b>7</b>	<b>Miscellaneous</b>	<b>11</b>
7.1	Changelogs:	11
7.1.1	Changelog opsi-client-agent	11
7.1.2	Changelog opsi-winst	12
7.1.3	Changelog windows netboot products	13
7.1.4	Changelog python-opsi	14
7.1.5	Changelog opsipxeconfd	15
7.1.6	Changelog opsiconfd	16
7.1.7	Changelog opsi-utils	16
7.1.8	Changelog opsi-linux-bootimage	17
7.1.9	Changelog opsi-depotserver	18
7.1.10	Changelog opsi4ucs	19
7.1.11	Changelog opsi-configed	20
7.1.12	Changelog opsi-swaudit	22

# Chapter 1

## Copyright

The Copyright of this manual is held by uib gmbh in Mainz, Germany.

This manual is published under the creative commons license  
*Attribution - ShareAlike* (by-sa).



A German description can be found here:

<http://creativecommons.org/licenses/by-sa/3.0/de/>

The legally binding German license can be found here:

<http://creativecommons.org/licenses/by-sa/3.0/de/legalcode>

The English description can be found here: <http://creativecommons.org/licenses/by-sa/3.0/>

The English license can be found here: <http://creativecommons.org/licenses/by-sa/3.0/legalcode>

Most parts of the opsi software are open source.

The parts of opsi that are not open source are still under cofunded development. Information about these parts can be found here: [http://uib.de/en/opsi\\_cofunding/index.html](http://uib.de/en/opsi_cofunding/index.html)

All the open source code is published under the GPLv3 and is moved to AGPLv3 while releasing opsi 4.0.3:



The legally binding GPLv3 license can be found here: <http://www.gnu.org/licenses/gpl.html>



The legally binding AGPLv3 license can be found here: <http://www.gnu.org/licenses/agpl-3.0-standalone.html>

Some information around the AGPL: <http://www.gnu.org/licenses/agpl-3.0.en.html>

For licenses to use opsi in the context of closed software please contact the uib gmbh.

The names *opsi*, *opsi.org*, *open pc server integration* and the opsi logo are registered trade marks of uib gmbh.

## Chapter 2

# Overview of the new features

The opsi Service Release 4.0.4 comes with a whole bunch of new features and improvements. Here comes a survey:

- with opsi 4.0.4 also the following distributions are supported:

- Debian Wheezy
- UCS 3.2

- Discontinuing support for:

- CentOS 5
- RedHat 5
- OpenSuse 11.3 / 11.4
- UCS 2.x

We will close these repositories. If the last supported opsi versions is needed for these distributions, we have a mirror for these repositories:

[http://download.uib.de/opsi4.0/archiv/discontinued\\_platforms/](http://download.uib.de/opsi4.0/archiv/discontinued_platforms/)

- opsi-configed:

- Extensively revised version

- opsi server components:

- a productId now may have the length of 128 characters (before it was just 32 characters).
- new command for the command line : `opsi-set-rights`  
does the same as `opsi-setup --set-rights` , but can be executed not only as root, but also with sudo from members of the group pcpatch (or opsi-file-admins):  
Example:

```
sudo opsi-set-rights .
```

- 
- new opsi shares:
    - `opsi_depot_rw` (like `opsi_depot`) points to `/var/lib/opsi/depot` as a writable connection. The share `opt_pcbin` now is discontinued. `opt_pcbin` won't be removed from existing installations, but won't be created with new installations.
    - `opsi_images` points to `/var/lib/opsi/ntfs-images` and is used by the product opsi-clonezilla.
  - new opsi bootimage based on kernel 3.10.10
  - Windows netboot products
    - Windows 8.1 support
    - new property: `data_partition_preserve` (always/if\_possible/never) (default=never)
    - new property: `pre_format_system_partitions` (default=true)
  - opsi-winst:
    - support of Windows 8.1
    - new command: `isSuccess` : Terminates Script execution with out error
    - new command: `noUpdateScript` : Do not run an update after setup script, even if it exists and the setup did not fail
    - new function `emptylist`
    - new function `getListContainingList`
  - swaudit (fix)
  - opsi-client-agent:
    - fix for WAN extension
    - fix for pcpatch user in AD/Samba4 (UCS 3.2 errata4)
  - experimental: opsi-setup-detector:
    - GUI tool for analyzing setup files and semi automated creation of opsi packets.
-

## Chapter 3

# Discontinuation

This chapter lists the discontinued versions. For several reasons, these distribution versions will not be supported by opsi anymore.

### 3.1 Discontinuation of Python 2.5 support

With this service release the official support for Python 2.5 is discontinued. This regards the Python 2.5 distributions: Debian Lenny and UCS 2.x. The affected repositories were closed at the end of 2013. At that time the current packets will be moved to the archive of [download.uib.de](http://download.uib.de). For affected opsi systems we recommend upgrading to new distribuion versions that still are supported.

### 3.2 Discontinuation: distribution versions

The following systems are discontinued because of lack of manufacturer maintenance:

- UCS 2
- Debian Lenny

The regarded repositories were closed at the end of 2013. For corresponding installations, we urgently recommend upgrading the OS. Before doing so, please check that the selected version is supported by opsi.

## Chapter 4

# Installation notes

Before installing the updates, for safety reasons we recommend making a backend backup with opsi-backup:

```
opsi-backup create
```

The products contained within this Release in several parts are dependent from each other. So install the Release as a packet and don't try to install just some parts of it.

As the first step you should create a server update, and then install the opsi products.

### 4.1 Notes for upgrading on RPM based Servers

RPM-based distributions ( Centos, Redhat, openSuse and SLES ) have become an upgrade for python-twisted package. Therefore a new dependency exists for the package python-asn1 / python-pyasn1. Please install this package on you system, before you start to upgrade opsi.

Redhat / Centos:

```
yum makecache  
yum install python-pyasn1
```

openSUSE / SLES:

```
zypper refresh  
zypper -v install python-pyasn1
```

### 4.2 opsi-Packages notes

The installation does not afford any special approach. It is done with the standard procedure of updating the server and the opsi products.

First you should update the server (use the commands according to your linux-distribution) and then the opsi products. This will be done by the opsi-product-updater:

```
opsi-product-updater -i -vv
```

In case of a multi depot installation, first upgrade the config-server, then upgrade the depots.

To make the new opsi\_depot\_rw share and the `sudo opsi-set-rights` available, please execute:

```
opsi-setup --patch-sudoers-file  
opsi-setup --auto-configure-samba
```



## Chapter 5

# opsi-configed 4.0.4.1

### 5.1 The current group will be saved

The *opsi-configed* now saves on the local machine and for the current user the current group selection. On the next start of configed, the current group is loaded, so managing this group can be continued.

### 5.2 Extended main menu bar

The *opsi-configed* now has in the main menu bar, besides the three buttons for selecting the main window mode, three buttons for invoking other action windows (before there was just the license manager).

So now it is six buttons in total:

- client configuration
- depot properties
- server configuration
- group actions
- packet actions
- license management



Figure 5.1: *opsi-configed*: Button bar with the new buttons for group actions and packet actions

### 5.3 Group actions

The window "group actions" provides the starting point for group related functions. Currently it offers just one function, which is used by the opsi-localimage-Option:

- to search for an operating system, that had been installed on all of the clients of the selected group and therefore can be offered for all of the clients of that group.

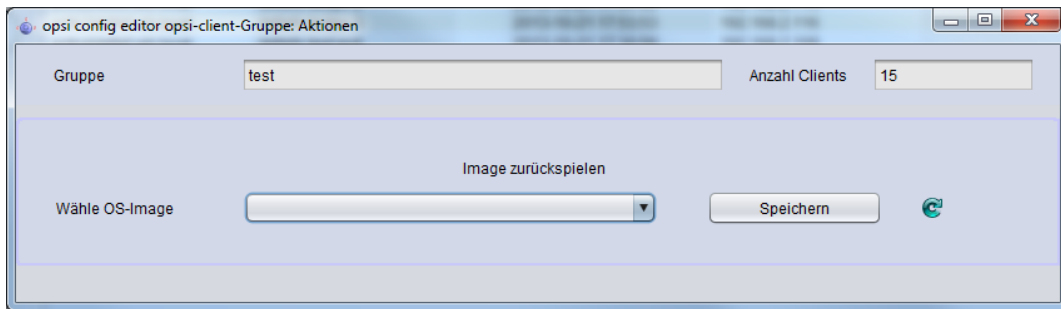


Figure 5.2: *opsi-configed*: Group actions (for opsi-local-image)

## 5.4 Product actions

The window "product actions" offers two features:

- An .opsi file (opsi packet) can be selected or entered and can be uploaded to the opsi server; the default upload directory on the server is the network (samba) share named opsi\_workbench. The button click starts installing the packet on the server, like invoking the opsi-package-manager.
- The WinPE files and install files for an Windows product (Windows Vista and above) can be uploaded to the server product directory (share opsi\_depot), so that windows products do not have to be managed from the server side.

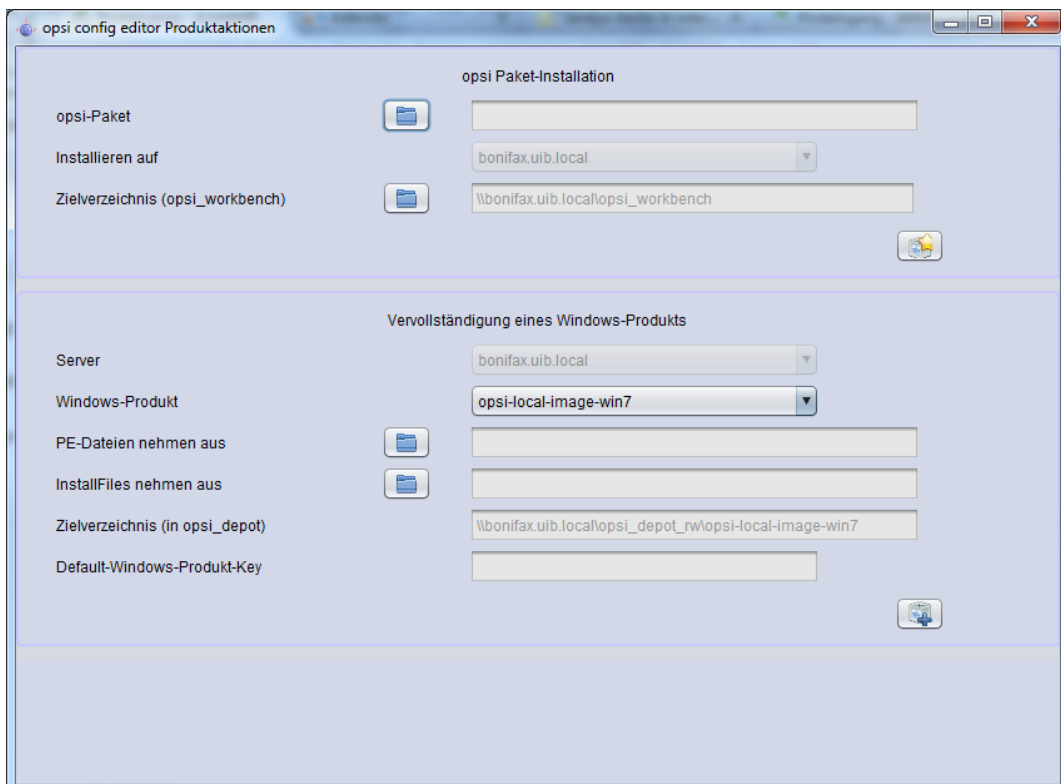


Figure 5.3: *opsi-configed*: packet and product actions

## 5.5 Opsiclient menu actions

### 5.5.1 Enabling and disabling of the client add and remove feature

There is a host parameter (Config) `configured.host_actions_disabled` to configure, whether from the *opsi-configed* clients can be added or removed.

The configuration parameters are:

- `add client`
- `remove client`

the *opsi-configed* allows multiple selection, so both parameters can be selected. The default is `<empty>`, so none is selected. Which means adding and removing clients is enabled.

The default setting can be changed so that adding and removing clients from the *opsi-configed* is disabled:

```
opsi-admin -d method config_createUnicode "configured.host_actions_disabled" "Disable host actions" ["add client","remove\
client"] ["add client","remove client"] false true
```

### 5.5.2 WakeOnLan feature with delay

For the WakeOnLan feature now can be selected, whether to send the network signal immediately to all selected clients, or with a selected delay between each client. When using delays, the *opsi-configed* is managing the delays and performing the action. So it must continue to run until the last WakeOnLan is signalled.

### 5.5.3 Triggering special opsiclientd events

The *opsi-configed* now can trigger some more special actions on the clients (opsiclientd) in addition to the default event "on\_demand". This feature requires special entries in the opsiclientd.conf. Which events (in addition) can be triggered on the client, can be set by server host properties.

### 5.5.4 For WAN clients: reset the packet cache

In case WAN clients need to empty the packet cache, now there is an *opsi-configed* feature to reset the cache.

## 5.6 New feature of the product configuration

### 5.6.1 search function

With the search function products can be searched by product names and (if desired) in combination with special values in the fields of the product table (like searching the client table). Therefore a search string can be entered. The search starts immediately and the first matching line is marked. If there is no match to be found (or characters are removed from the search string), the first line of the table is marked.

The context menu offers some more options.

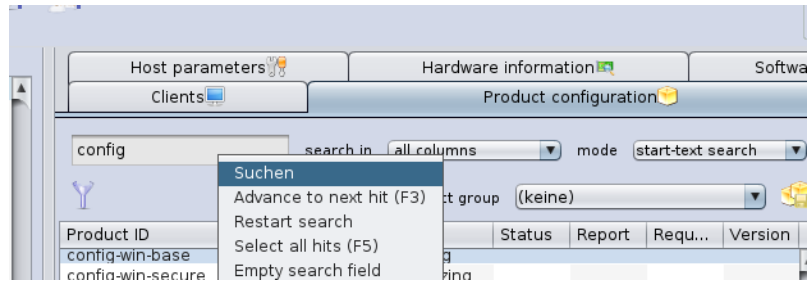


Figure 5.4: *opsi-configed*: Product search with context menu

To get a better overview, activating the filter function reduces the product view to the selected products only. The selection stays active until the filter is disabled by clicking the filter button again.

### 5.6.2 Opsi-linux-bootimage

The new opsi-linux-bootimage has a lot of fixes and a better cifs support. The new package inherits a 32-bit and 64-bit version of the image. This will be mainly needed for uefi- and linux-support. These changes should not impact the normal work of opsi. The new image will be used automatically if needed.

## Chapter 6

# UCS

With opsi 4.0.4 service release also UCS 3.2 for opsi4ucs is supported.

### 6.1 UCS Executable bit fix

Since the update of the samba packets in UCS 3.1-1 and above there is a problem accessing the opsi depot share. Every executable file on the opsi depot share must have the executable bit set on the server site, so that Windows clients may execute these files. Excepted from this change is the UCS administration account.

vgl. <https://forum.opsi.org/viewtopic.php?f=1&t=4810>

With the 4.0.4 release this problem is solved by adding the group opsifileadmins as adminuser in the share configuration of the opsi\_depot share. So accessing the opsi depot share performs as usual.

This change has been made to the opsi\_depot share only, for it is the main opsi share and published as ReadOnly.

If you need this change also for some other shares (like the opsi\_workbench), you can add it manually for these shares. In this case edit the share.conf file of that share, which is to be found in `/etc/samba/shares.conf.d`. Add the following line:

```
admin users = administrator join-backup @$fileadmingroup
```



#### Warning

The UCR variable: `samba4/ntacl/backend` has been set to `None` for the former UCS 3.0 fix, with the new version it is reset to `native`.

### 6.2 Changes of the firewall rules

With the 4.0.4 release the opsi firewall rules have been changed. The firewall rules used to be set in the template file: `/etc/security/packetfilter.d/50_local.sh`. Mainly the setting is about two ports:

1. TCP 4447 opsi-Webservice
2. UDP 69 tftp

This configuration with the new version is withdrawn to be set with ucr as registry variables. The new firewall rules are set as `package` rules and can be managed by UCR (to read, modify, deactivate, delete).

For details please refer to the UCS documentation.

## Chapter 7

# Miscellaneous

### 7.1 Changelogs:

#### 7.1.1 Changelog opsi-client-agent

opsiclientd (4.0.77) stable; urgency=low

- WAN/VPN: Win 8.1 mshotfix support
- WAN/VPN: Bugfix for connection loose by productCaching, when using webdav
- Changed LogfileDir from C:\\tmp\\opsiclientd.log to C:\\opsi.org\\log\\opsiclientd.log

-- Erol Ueluekmen <e.ueluekmen@uib.de> Tue, 14 Jan 2014 01:08:04 +0100

opsi-client-agent (4.0.4.4-1) stable; urgency=low

- opsiclientd 4.0.77
- python-opsi 4.0.4.4-1
- fix in install logic at command line parameter handling to avoid runtime errors

-- Erol Ueluekmen <e.ueluekmen@uib.de> Wed, 23 Jan 2014 01:05:28 + 0100

opsi-client-agent (4.0.4.3-1) stable; urgency=low

- if \$INST\_MODUS\$ = "INSTALL" tyr to initialize webservice by clientid and pckey

-- Detlef Oertel <d.oertel@uib.de> Mon, 13 Jan 2014 15:00:00 +0100

opsi-client-agent (4.0.4.2-1) stable; urgency=low

- update to opsi-winst 4.11.3.11
- allow non-admin logins (scripted or interactive) to install clients only with createClient credential (see also 4.0.2.2-1)

-- Detlef Oertel <d.oertel@uib.de> Wed, 08 Jan 2014 15:00:00 +0100

opsi-client-agent (4.0.4.1-1) stable; urgency=low

- patch opsicliend.conf: [depot\_server]: user (from config clientconfig

-- Detlef Oertel <d.oertel@uib.de> Fri, 20 Dec 2013 15:00:00 +0100

opsi-client-agent (4.0.3.1-5) stable; urgency=low

- Do not install opsi-gina when loginblockerstart is off

-- Erol Ueluekmen <e.ueluekmen@uib.de> Thu, 16 Mai 2013 13:00:00 +0100

opsi-client-agent (4.0.3.1-4) stable; urgency=low

- experimental replace \_ by - for pc name

-- Detlef Oertel <d.oertel@uib.de> Thu, 02 Mai 2013 15:00:00 +0100

opsi-client-agent (4.0.3.1-3) stable; urgency=low

- cleanup vcredist files on data partition

-- Detlef Oertel <d.oertel@uib.de> Tue, 09 Apr 2013 15:00:00 +0100

## 7.1.2 Changelog opsi-winst

opsi-winst (4.11.3.11) stable; urgency=low

- fix: use of sysnative with winbatch

—Detlef Oertel <d.oertel@uib.de> Fri, 8 Nov 2013:15:00:00 +0200

opsi-winst (4.11.3.10) stable; urgency=low

- manifest extended for win 8.1:

<http://msdn.microsoft.com/en-us/library/windows/desktop/dn302074%28v=vs.85%29.aspx>

—Detlef Oertel <d.oertel@uib.de> Tue, 22 Oct 2013:15:00:00 +0200

opsi-winst (4.11.3.9) stable; urgency=low

- Patchtextfile: no trim of searchstrings: use gestringA instead of getString
- wilog: all log strings are cut to max 500 chars

—Detlef Oertel <d.oertel@uib.de> Thu, 02 Sep 2013:15:00:00 +0200

opsi-winst (4.11.3.8-2) stable; urgency=low

- Fix in internal Version: now 4.11.3.8

—Detlef Oertel <d.oertel@uib.de> Fri, 02 Aug 2013:15:00:00 +0200

opsi-winst (4.11.3.8) stable; urgency=low

- changed TOPsiMethodCall.getJsonHashListString: converting string with SO before assingment

—Detlef Oertel <[d.oertel@uib.de](mailto:d.oertel@uib.de)> Thu, 01 Aug 2013:15:00:00 +0200

opsi-winst (4.11.3.7) stable; urgency=low

- changed DsiWin32 to work with lazarus 1.0.8/fpc 2.6.2
- new command: isSuccess : Terminates Script execution with out error
- new command: noUpdateScript : Do not run a update after setup script even if it is there and we are not failed
- new function emptylist
- new function getlistcontainingList

—Detlef Oertel <[d.oertel@uib.de](mailto:d.oertel@uib.de)> Tue, 29 Jul 2013:15:00:00 +0200

### 7.1.3 Changelog windows netboot products

windows (4.0.4-1) stable; urgency=low

- UCS 3.2 Errata 4 fix: mount share from PE with valid domain: shareusername via webservice from clientconfig.depot.user

-- detlef oertel <[d.oertel@uib.de](mailto:d.oertel@uib.de)> Thu, 16 Jan 2014 16:01:53 +0200

windows (4.0.3-7) stable; urgency=low

- replace self.\_forceReReadPartionTable() by disk.\_forceReReadPartionTable()

-- uib GmbH <[info@uib.de](mailto:info@uib.de)> Tue, 03 Sep 2013 15:19:15 +0000

windows (4.0.3-6) stable; urgency=low

- new version 4.0.3.1 of create\_driver\_links.py with 7zip Patch (#507) and syntax error patch (do 28.6.)

-- uib GmbH <[info@uib.de](mailto:info@uib.de)> Tue, 28 June 2013 15:19:15 +0000

windows (4.0.3-5) stable; urgency=low

- check existence of winpe partition with retries before making filesystem (copied from posix.py)
- Default for pre\_format\_system\_partitions is now *true*

-- uib GmbH <[info@uib.de](mailto:info@uib.de)> Tue, 06 June 2013 15:19:15 +0000

windows (4.0.3-4) stable; urgency=low

- remove property: delete\_partition\_table (always/if\_needed/never) (default=always)
- new property: data\_partition\_preserve (always/if\_possible/never) (default=never)

-- uib GmbH <[info@uib.de](mailto:info@uib.de)> Tue, 09 Apr 2013 15:19:15 +0000

windows (4.0.3-3) stable; urgency=low

- new property: delete\_partition\_table (always/if\_needed/never) (default=always)
- new property: preformat boot and system partition

-- uib GmbH <[info@uib.de](mailto:info@uib.de)> Wed, 20 Mar 2013 15:19:15 +0000

windows (4.0.3-2) stable; urgency=low

- fix in logging in real uefi mode

-- uib GmbH <[info@uib.de](mailto:info@uib.de)> Thu, 11 Mar 2013 15:19:15 +0000



## 7.1.4 Changelog python-opsi

python-opsi (4.0.4.5-2) stable; urgency=low

- Fixes in unicode function of objects.

-- Erol Ueluekmen <e.ueluekmen@uib.de> Sun, 09 Feb 2014 02:08:54 +0100

python-opsi (4.0.4.5-1) stable; urgency=low

- set of small fixes.

-- Erol Ueluekmen <e.ueluekmen@uib.de> Fri, 07 Feb 2014 02:10:23 +0100

python-opsi (4.0.4.4-1) testing; urgency=low

- added `geo_override` patch for older bios (opsi-linux-bootimage)
- removed debug outputs from `repository.py`
- SQL backend: tables `PRODUCT_PROPERTY` and `BOOT_CONFIGURATION` now use type `TEXT` for column *description*
- Harddisks have a new attribute *rotational*.
- MySQL backend: table `HOST`: using `DEFAULT` value for column *created* to avoid using the values given by MySQL. These values did result in a unwanted misbehaviour where clients always updated their *created* attribute to the time of the last update.
- Removed workarounds for Python versions prior to 2.6
- New depot selection algorith: Select the depot with lowest latency that either is or belongs to the master depot the client is attached to.
- New module: `OPSI.Util.Task.CleanupBackend`
- Suppressing `DeprecationWarning` from `ldaptor`.
- Bugfix in `HTTPRepository`.
- Workarround for Windows 8.1 detection.

-- Erol Ueluekmen <e.ueluekmen@uib.de> Wed, 29 Jan 2014 01:22:18 +0100

python-opsi (4.0.4.3-1) testing; urgency=low

- Small bugfix for `objectToBeautifiedText` Method.

-- Erol Ueluekmen <e.ueluekmen@uib.> Fri, 20 Dec 2013 18:11:37 +0100

python-opsi (4.0.4.2-1) testing; urgency=low

- `objectToBeautifiedText` optimization.

-- Erol Ueluekmen <e.ueluekmen@uib.de> Wed, 11 Dec 2013 11:02:06 +0100

python-opsi (4.0.4.1-1) testing; urgency=low

- Minimum required Python version is now 2.6

- New backend method for configed: setRights
- Tar archives: make use of pigz for parallel gzip compression if available. Requires pigz version >2.2.3
- File backend: Added options to configure user/group the files belong to.
- Bugfix: Added missing import to prevent "opsi-setup --renew-opsiconfd-cert" from crashing
- Bugfix: Do not fail when reading distribution information from an UCS system.
- Bugfix in posix.py for precise
- Remove loading geo\_override kernel patch
- Fixing mountoptions handling for cifs-mount
- Added Transaction control for sql-backends for prevent of duplicate entries in productProperty-Defaultvalues. (fixes #456)
- New module: OPSI.Util.Task.Certificate

-- Erol Ueluekmen <e.ueluekmen@uib.de> Tue, 12 Sep 2013 11:41:33 +0200

python-opsi (4.0.3.3-1) experimental; urgency=low

- Fixes for wheezy and raring support
- System.Windows: Added handling mshotfix for win8 and win2012
- Moved method formatFileSize from OPSI.web2.dirlist to OPSI.Util
- Added 40\_groupActions.conf in opsi-webservice-extender
- Modified debian postinst script (user opsiconfd will be created if not exists)

-- Erol Ueluekmen <e.ueluekmen@uib.de> Tue, 03 Jun 2013 11:41:33 +0200

python-opsi (4.0.3.2-1) experimental; urgency=low

- Don't load geo\_override module on 64bit bootimage.

-- Erol Ueluekmen <e.ueluekmen@uib.de> Mon, 29 Apr 2013 16:13:16 +0200

### 7.1.5 Changelog opsipxeconfd

opsipxeconfd (4.0.4.1-2) testing; urgency=low

- version modified for buildservice

-- Erol Ueluekmen <e.ueluekmen@uib.de> Tue, 05 Nov 2013 15:18:59 +0100

opsipxeconfd (4.0.4.1-1) testing; urgency=low

- Specified user / group to use for logrotate 3.8 or newer

-- Niko Wenselowski <n.wenselowski@uib.de> Wed, 21 Aug 2013 11:58:55 +0200

### 7.1.6 Changelog opsiconfd

opsiconfd (4.0.4.3-1) testing; urgency=low

- webstart service modified for signed jar support.

-- Erol Ueluekmen <e.ueluekmen@uib.de> Tue, 07 Jan 2014 16:03:46 +0100

opsiconfd (4.0.4.2-1) testing; urgency=low

- Consistent ownership of logfiles: all are now owned by opsiadmin

-- Niko Wenselowski <n.wenselowski@uib.de> Thu, 28 Nov 2013 15:02:49 +0100

opsiconfd (4.0.4.1-2) testing; urgency=low

- version modified for buildservice

-- Erol Ueluekmen <e.ueluekmen@uib.de> Tue, 05 Nov 2013 15:16:31 +0100

opsiconfd (4.0.4.1-1) testing; urgency=low

- Internals: re-organised imports to work with newer python-opsi.
- Specified user / group to use for logrotate 3.8 or newer
- fixed java webstart problem for internet explorer.
- configed.jnlp: max-heap-space set to 768M.

-- Erol Ueluekmen <e.ueluekmen@uib.de> Fri, 23 Oct 2013 14:23:17 +0200

opsiconfd (4.0.3.2-1) experimental; urgency=low

- resource.py: max-heap-size increased to 1024M.

-- Erol Ueluekmen <e.ueluekmen@uib.de> Wed, 29 May 2013 16:21:39 +0200

### 7.1.7 Changelog opsi-utils

opsi-utils (4.0.4.1-2) testing; urgency=low

- version modified for buildservice

-- Erol Ueluekmen <e.ueluekmen@uib.de> Tue, 05 Nov 2013 15:22:52 +0100

opsi-utils (4.0.4.1-1) testing; urgency=low

- opsi-admin: Code cleanups resulting in an depending on python-opsi 4.0.3.4
- added manpages
- added includeProductIds in repository-configuration for opsi-product-updater.conf

-- Niko Wenselowski <n.wenselowski@uib.de> Tue, 22 Oct 2013 11:31:19 +0200

opsi-utils (4.0.3.2-1) testing; urgency=low

- opsi-admin: added task uninstallWhereInstalled

-- Erol Ueluekmen <e.ueluekmen@uib.de> Fri, 06 Sep 2013 10:04:53 +0200

## 7.1.8 Changelog opsi-linux-bootimage

opsi-linux-bootimage (20140118-1) stable; urgency=low

- partclone added for 64bit version.
- kernel 3.10.27
- Shipping 32 and 64bit version with opsi-linux-bootimage package
- install3264 integrated in build process. Now package supports pxetemplates: install (x86), install-x64 and install3264 (for both: A productProperty with name: architecture in netbootproduct is needed to use this pxetemplate.)

-- Erol Ueluekmen <e.ueluekmen@uib.de> Wed, 29 Jan 2014 00:40:56 +0100

opsi-linux-bootimage (20131219-1) experimental; urgency=low

- Try to fix endless loop by transferring files from cifs-share.

-- Erol Ueluekmen <e.ueluekmen@uib.de> Thu, 19 Dec 2013 15:59:50 +0100

opsi-linux-bootimage (20131216-1) experimental; urgency=low

- QuickFix: clientconfig.depot.user handling added (for domain\user splitting)

-- Erol Ueluekmen <e.ueluekmen@uib.de> Mon, 16 Dec 2013 11:04:33 +0100

opsi-linux-bootimage (20131121-1) testing; urgency=low

- Fix error "bool object is not callable" when using pre-exec parameter"

-- Erol Ueluekmen <e.ueluekmen@uib.de> Thu, 21 Nov 2013 23:26:51 +0100

opsi-linux-bootimage (20131106-1) testing; urgency=low

- Added pre-script parameter.
- Added previously removed geo\_override patch for older bios-versions
- added python-opsi: 4.0.4.2-1
- added tftp client

-- Erol Ueluekmen <e.ueluekmen@uib.de> Wed, 06 Nov 2013 13:25:28 +0100

opsi-linux-bootimage (20131021-1) testing; urgency=low

- Fixes in pre-execute handling
- fixes from python-opsi: 4.0.4.1-1
- EFI-stub added for kernel compile instructions

-- Erol Ueluekmen <e.ueluekmen@uib.de> Mon, 21 Oct 2013 15:02:53 +0200

opsi-linux-bootimage (20130920-1) experimental; urgency=low

- kernel 3.10.10
- python-opsi: 4.0.4.1-1
- added pre-execute handling

-- Erol Ueluekmen <e.ueluekmen@uib.de> Mon, 23 Sep 2013 04:19:32 +0200

opsi-linux-bootimage (20130207-2) experimental; urgency=low

- Quick Hack for Bios-Versions, that have only a option for "RAID+AHCI"
  - this devices will be shown as RAID mode Devices in lshw output

-- Erol Ueluekmen <e.ueluekmen@uib.de> Mon, 22 Apr 2013 15:41:29 +0200

### 7.1.9 Changelog opsi-depotserver

opsi-depotserver (4.0.4.3-1) stable; urgency=low

- Do not duplicate the lines of the sudoers file.

-- Erol Ueluekmen <e.ueluekmen@uib.de> Wed, 05 Feb 2014 10:30:15 +0100

opsi-depotserver (4.0.4.2-3) testing; urgency=low

- debian postinst patch: don't fail if nothing is found

-- Erol Ueluekmen <e.ueluekmen@uib.de> Mon, 16 Dec 2013 15:29:05 +0100

opsi-depotserver (4.0.4.2-2) testing; urgency=low

- Correctly checking for running Oracle mysqld / usage of MySQL backend.

-- Niko Wenselowski <n.wenselowski@uib.de> Mon, 16 Dec 2013 14:16:02 +0100

opsi-depotserver (4.0.4.2-1) testing; urgency=low

- opsi-setup: small fix for --edit-config-defaults

-- Erol ueluekmen <e.ueluekmen@uib.de> Wed, 11 Dec 2013 03:38:29 +0100

opsi-depotserver (4.0.4.1-2) testing; urgency=low

- version modified for buildservice

-- Erol Ueluekmen <e.ueluekmen@uib.de> Tue, 05 Nov 2013 15:25:29 +0100

opsi-depotserver (4.0.4.1-1) testing; urgency=low

- opsi-setup: Making use of new module OPSI.Util.Task.Certificate
- opsi-set-rights: new wrapper script added for opsi-setup --set-rights

-- Erol Ueluekmen <e.ueluekmen@uib.de> Mon, 07 Oct 2013 08:25:38 +0200

---

opsi-depotserver (4.0.3.4-1) experimental; urgency=low

- opsi-setup: Ignoring entries of configed.saved\_search in --edit-config-defaults
- opsi-setup: Truncating long value entries if they are longer than 60 characters
- opsi-setup: added SMB-Shares: opsi\_depot\_rw and opsi\_images

-- Erol Ueluekmen <e.ueluekmen@uib.de> Tue, 03 Sep 2013 12:50:37 +0200

opsi-depotserver (4.0.3.3-1) experimental; urgency=low

- opsi-setup: cleanupBackend fixes now duplicate productProperty default values in mysql-backend new option --patch-sudoers-file

-- Erol Ueluekmen <e.ueluekmen@uib.de> Tue, 31 May 2013 17:05:07 +0200

### 7.1.10 Changelog opsi4ucs

opsi4ucs (4.0.4.6-1) stable; urgency=low

- small fix for --init-current-config in opsi-setup
- fix in joinscript for samba4 detection

-- Erol Ueluekmen <e.ueluekmen@uib.de> Wed, 19 Feb 2014 09:14:15 +0100

opsi4ucs (4.0.4.5-1) stable; urgency=low

- Do not duplicate the lines of the sudoers file.
- Added new config clientconfig.depot.user
- Fixing installation on member-server

-- Erol Ueluekmen <e.ueluekmen@uib.de> Tue, 11 Feb 2014 16:14:15 +0100

opsi4ucs (4.0.4.4-1) testing; urgency=low

- Changed firewall rules on UCS3 to ucr variables (fix for UCS 3.2 support)

-- Erol Ueluekmen <e.ueluekmen@uib.de> Thu, 14 Nov 2013 16:56:42 +0100

opsi4ucs (4.0.4.3-1) testing; urgency=low

- fixing opsi-setup bug
- 99opsi4ucs.inst: only setting opsifileadmins group when ucs version > 3 and samba version 4 is found
- update-mysql: Alter table to support very long descriptions.

-- Erol Ueluekmen <e.ueluekmen@uib.de> Tue, 12 Nov 2013 10:11:42 +0100

opsi4ucs (4.0.4.2-1) testing; urgency=low

- opsi-setup: fix for automatic registering depot by the joinscript.

---

-- Erol Ueluekmen <e.ueluekmen@uib.de> Wed, 06 Nov 2013 10:26:02 +0100

opsi4ucs (4.0.4.1-2) testing; urgency=low

- opsi-set-rights added.

-- Erol Ueluekmen <e.ueluekmen@uib.de> Tue, 05 Nov 2013 15:10:02 +0100

opsi4ucs (4.0.4.1-1) testing; urgency=low

- join Script: Fixing executable-Bit problem for opsi\_depot Share
- Removing opt\_pcbins-Share
- Adding opsi\_depot\_rw and opsi\_images Share

### 7.1.11 Changelog opsi-configed

- bugfix in start routines

-- Rupert Roeder <r.roeder@uib.de> Wed, 19 Sep 2013 10:56:24 +0200

- other opsiclientd events callable from configed

-- Rupert Roeder <r.roeder@uib.de> Tue, 17 Sep 2013 16:56:24 +0200

- new invokeLater construct to try to avoid gui thread problem

-- Rupert Roeder <r.roeder@uib.de> Tue, 17 Sep 2013 12:56:24 +0200

- menu entries for client adding and removing can be disabled by a configed
- product action page with package installation and completing a win product ready

-- Rupert Roeder <r.roeder@uib.de> Mon, 16 Sep 2013 17:02:14 +0200

- product action page implemented with package installation and completing a windows product
- improved startup thread handling

-- Rupert Roeder <r.roeder@uib.de> Mon, 28 Aug 2013 14:00:00 +0200

opsi-configed (4.0.3.4.9-1) testing; urgency=low

- general exception handler set
- new client call deleteProductCaches

-- Rupert Roeder <r.roeder@uib.de> Mon, 19 Aug 2013 14:00:00 +0200

- tree reload bugs eliminated (redmine #511)

-- Rupert Roeder <r.roeder@uib.de> Fri, 26 Jul 2013 14:00:00 +0200

- null pointer exception repaired which prevented subgroups of GROUPS

---

-- Rupert Roeder <r.roeder@uib.de> Tue, 23 Jul 2013 14:00:00 +0200

- experimental Polish, Spanish, and Russian localization

-- Rupert Roeder <r.roeder@uib.de> Mon, 08 Jul 2013 14:00:00 +0200

- product sorting of product list reconfigured to secondary strength in order to distinguish products by hyphens

-- Rupert Roeder <r.roeder@uib.de> Tue, 18 Jun 2013 14:00:00 +0200

- group action for local image restore

-- Rupert Roeder <r.roeder@uib.de> Mon, 17 Jun 2013 14:00:00 +0200

- concept for locally saving session data introduced
- first usage for saving the selected depots and saving a selected group
- fixing a bug in group selection

-- Rupert Roeder <r.roeder@uib.de> Thu, 13 Jun 2013 14:00:00 +0200

- experimental synced data model completed for product\_on\_client

-- Rupert Roeder <r.roeder@uib.de> Wed, 31 May 2013 14:00:00 +0200

- fixed: product list is reloaded when changing depot (representative)
- the data for searching are now cached (with some exception behalf of memory problems)

-- Rupert Roeder <r.roeder@uib.de> Wed, 29 May 2013 14:00:00 +0200

- fixed: setting again an old value of a host is now possible
- implementing some variations of loading PRODUCT\_ON\_CLIENT with performance tests

-- Rupert Roeder <r.roeder@uib.de> Wed, 22 May 2013 14:00:00 +0200

- fixed: now keeping installation state table model when directly returning to the same table
- trying to get construction of installation state table modle more efficient

-- Rupert Roeder <r.roeder@uib.de> Wed, 20 Mar 2013 16:00:00 +0200

- fixed: now updating product table after saving by context menu

-- Rupert Roeder <r.roeder@uib.de> Wed, 20 Mar 2013 16:00:00 +0200

- more efficient webservice call for getting productOnClients
- setting requested heap space to 1024m

-- Rupert Roeder <r.roeder@uib.de> Thu, 14 Mar 2013 16:00:00 +0200



### 7.1.12 Changelog opsi-swaudit

swaudit (4.0.2-3) stable; urgency=low

- Fix duplicate entry: truncating all parts of the primary key to their max length in the DB:  
"name="+strPart(\$name\$, "1", "99")
- ScriptErrorMessages = off

-- detlef oertel <d.oertel@uib.de> Mon, 05 Aug 2013 15:00:00 +0100

swaudit (4.0.2-2) stable; urgency=low

- switch to ekeyfinder (<https://sourceforge.net/projects/ekeyfinder/>)

-- detlef oertel <d.oertel@uib.de> Thu, 06 Dec 2012 15:00:00 +0100